

Point Beach State Forest

Point Beach State Forest Trails

Swales Nature Trail (0.75 mi) *Hiking, Snowshoeing*
This self-guided trail begins just west of the Lodge building parking lot.

Red Pine Trail (3.75 mi) *Hiking, Bicycling, Cross-country skiing (Skate/Classic)*
Parking for the Red Pine Trail is available off Cty. Hwy O. The outer loop is 2.9 miles, the north connector at the group camp is 0.25 mi and the southern connector at the parking lot is 0.6 mi.

Horse Trail Loop (2.3 mi) *Horseback Riding, Hiking, Snowshoeing*
Park at the horse trailer parking lot off Cty. Hwy. O.

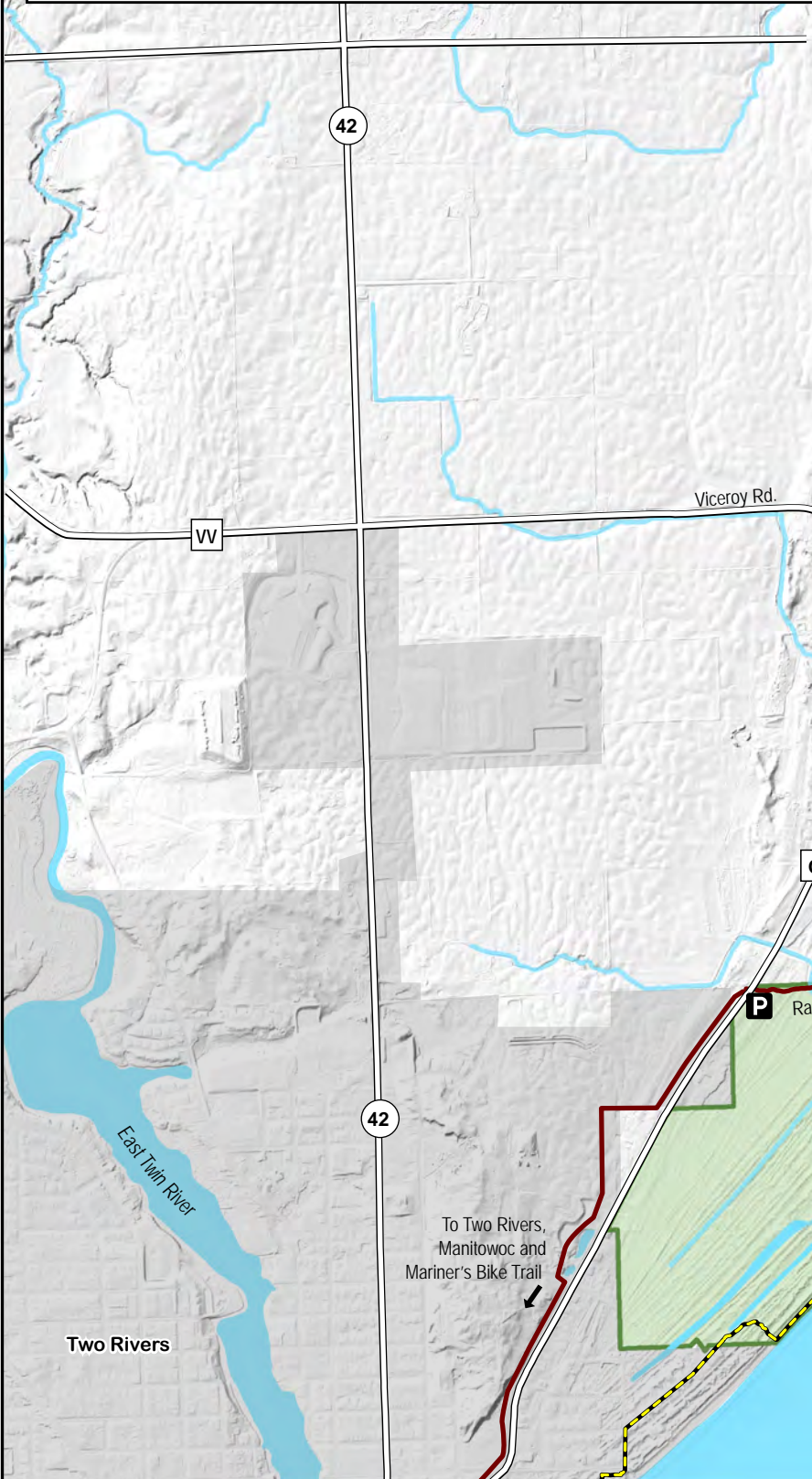
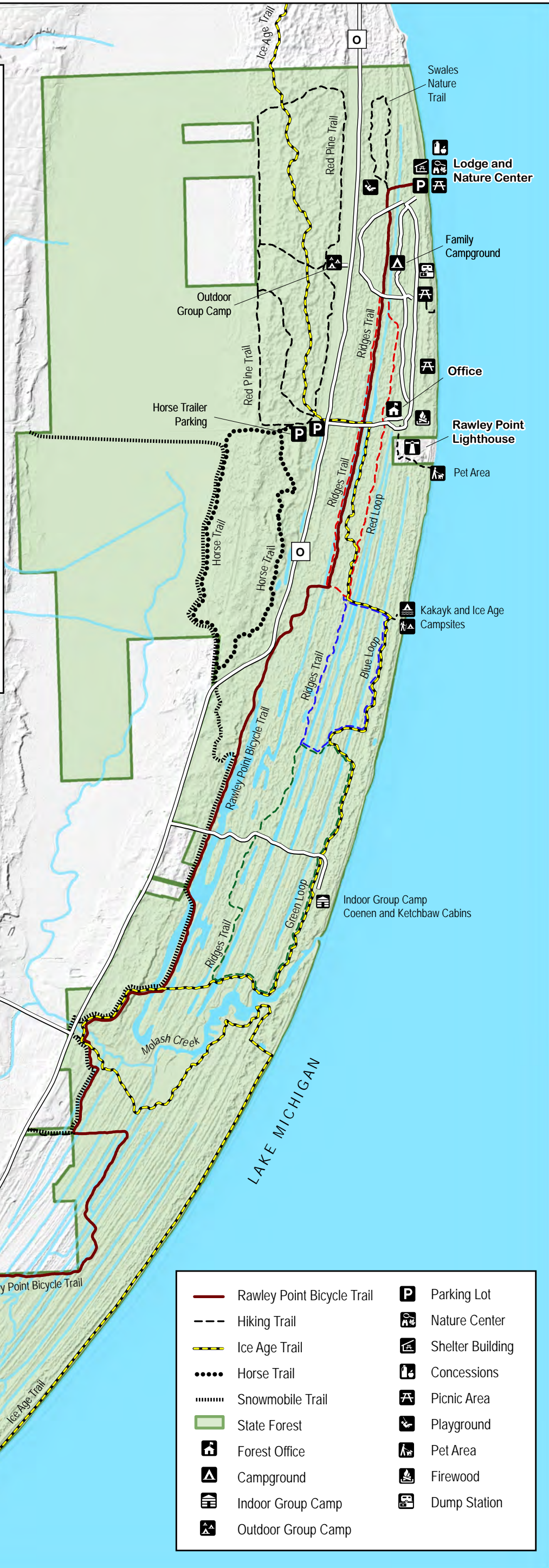
Ridges Trail (3.0 mi one-way) *Hiking, Cross-country skiing (Classic only)*
The Ridges Trail begins at the Lodge parking lot which is about 0.25 miles from the start of the Red Loop and ends at the Ice Age Trail near Molash Creek. Part of the trail is also on the Rawley Point Bicycle Trail.

Three loops diverge from the trail, allowing hikers/skiers the option of taking different lengths; Red Loop (2.3 mi), Blue Loop (1.5 mi), Green Loop (2.4 mi)

Rawley Point Bicycle Trail (5.2 mi) *Bicycling, Hiking*
The trailhead for the Rawley Point Bicycle Trail begins at the Lodge parking lot. The Rawley Point Trail exits the park at Cty. Hwy. O and continues to Two Rivers and Manitowoc, connecting to the Mariner's Bike Trail.

Ice Age National Scenic Trail (8.0 mi) *Hiking, Snowshoeing*
The Ice Age Trail winds through the forest for 8 miles north to south. Both the Ridges Trail and Rawley Point Bicycle Trail follow sections of the trail.

Snowmobile Trail. Connects to the Manitowoc County snowmobile trail system when county trails are open. Follows parts of other property trails.



Rawley Point Bicycle Trail	Parking Lot
Hiking Trail	Nature Center
Ice Age Trail	Shelter Building
Horse Trail	Concessions
Snowmobile Trail	Picnic Area
State Forest	Playground
Forest Office	Pet Area
Campground	Firewood
Indoor Group Camp	Dump Station
Outdoor Group Camp	

